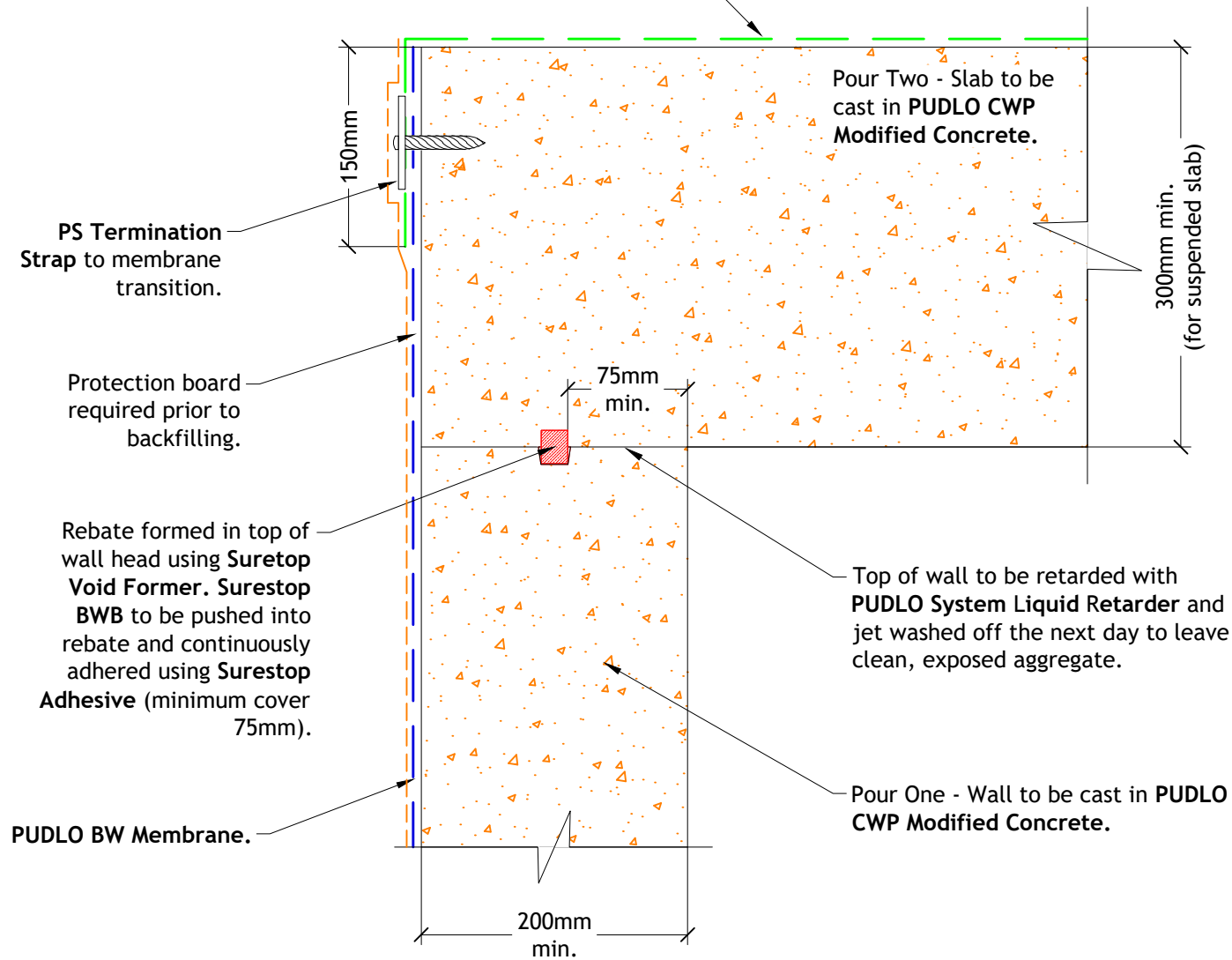
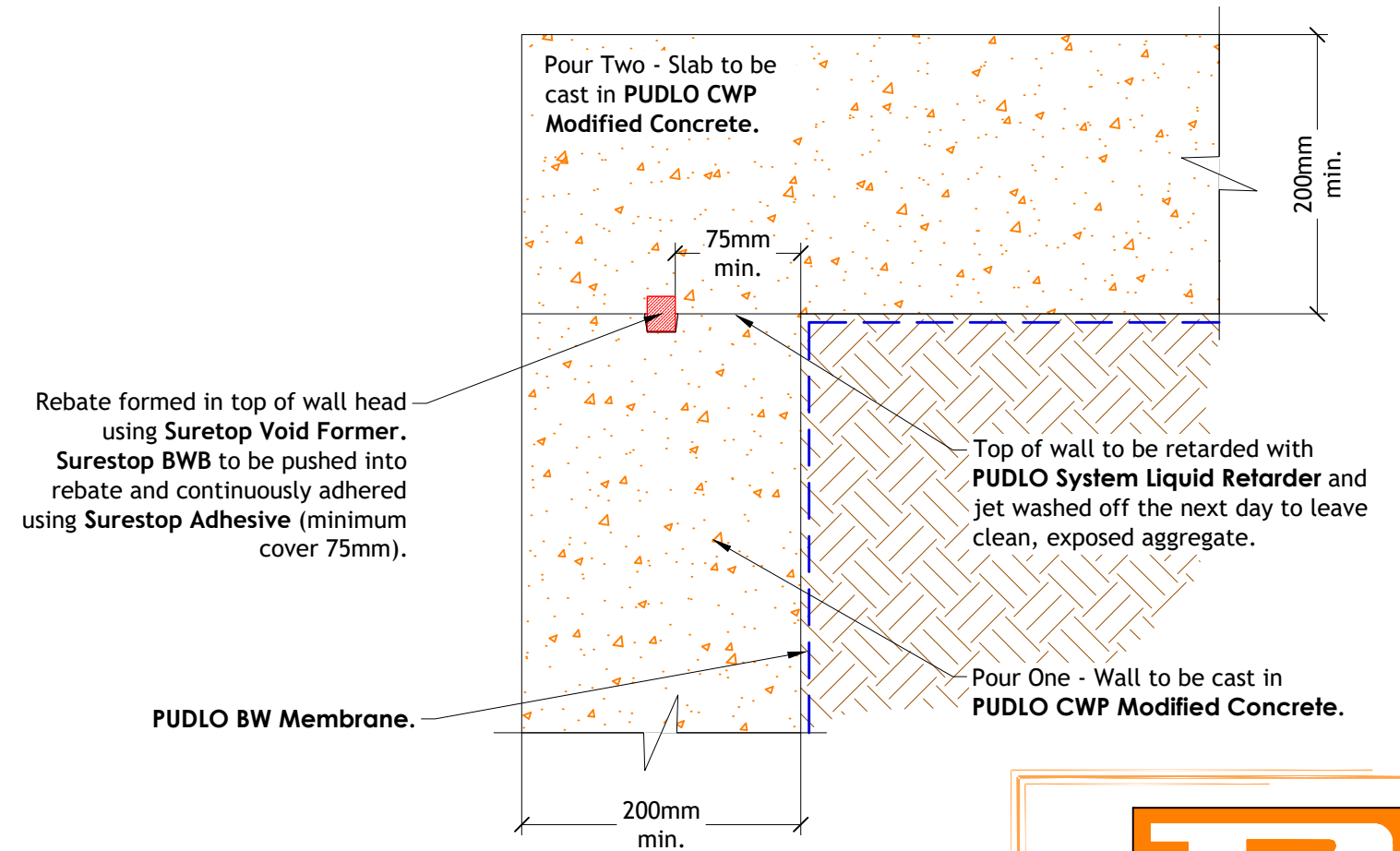


PUDLO Self Seal to be taken across capping beam and up to DPC level.
 PUDLO Self Seal Primer to be applied prior to PUDLO Self Seal.

Note:-
 PUDLO PS Cure 90 is spray applied to the surface of newly placed concrete to prevent premature drying out of the concrete surface, reducing surface shrinkage, cracking and dusting.




1 Wall Head at G/F Slab
 Scale: 1:5



2 Wall Head at Ground Bearing Slab
 Scale: 1:5

Note:-
 This PUDLO detail is to assist with the installation of its products. The detail shows how PUDLO CWP Modified Concrete and how PUDLO ancillaries are to be installed. For site specific details and confirmation on extent of where PUDLO CWP Modified Concrete is used i.e. Overlay drawings, must be confirmed by structural engineers/contractor. Individual/Company responsibility for design of the structure must ensure that details shown on PUDLO drawings match the latest construction issue drawings.
 The information shown on this detail is given without obligation, or warranty PRIOR to consultation or communication with PUDLO Products Limited.



PUDLO
 PUDLO Products Limited

Revision History				
DATE	DESCRIPTION	Rev	Drm	Chk
23/05/24	First Issue.			

PUDLO Products Limited
 Unit 1, Alington Road,
 St Neots, PE19 6YH
 Tel: +44 (0)1480 756888 Email: sales@pudlo.com
 www.pudlo.com

DRAWING TITLE WALL HEAD JOINT DETAIL	PROJECT --
STATUS --	SCALE As shown on A3
DRAWING NUMBER PPL-TJD-P2.5-SS-013	REVISION -
CLIENT --	SHEET No. 1 of 1

COPYRIGHT: Not to be reproduced without written permission

A3

PUDLO Products Limited
 STD April 2024