

PUDLO Self Seal to be taken across capping beam and up to DPC level.
 PUDLO Self Seal Primer to be applied prior to PUDLO Self Seal.

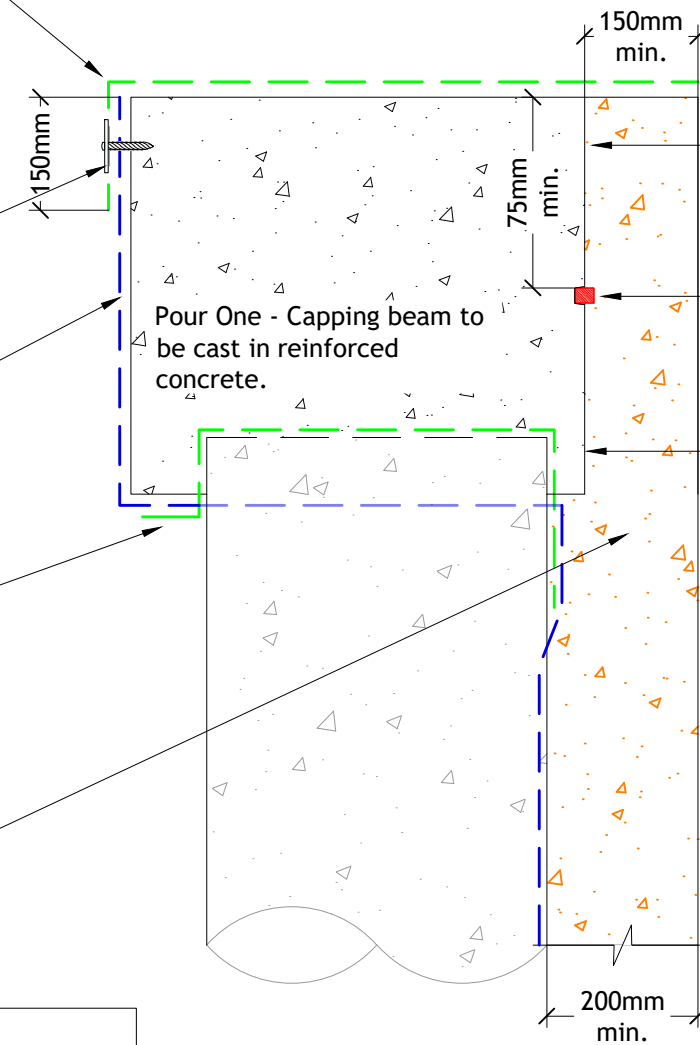
PS Termination Strap to membrane transition.

PUDLO BW Membrane.

For pile head at capping beam level detail refer to drawings; 'PPL-TJD-BW-DS-022/24' & 'PPL-TJD-BW-DS-023/25'.

Pour Two - Liner wall to be cast in PUDLO CWP Modified Concrete.

Note:-
 Concrete should not be allowed to fall more than a maximum 2.5m from the end of the static line pump or skip hopper hose.



Interface between PUDLO and non-PUDLO concrete excluded from warranty. Please contact PUDLO for project specifics.

Surestop Void Former to be nailed to capping beam shuttering. Surestop BWB to be pushed into rebate and continuously adhered using Surestop Adhesive (minimum 75mm cover).

Face of capping beam to be retarded with PUDLO System Gel Retarder and jet washed off prior to wall pour to leave a clean, exposed aggregate.



Revision History

DATE	DESCRIPTION	Rev	Drn	Chk	Apvl
28/05/24	First Issue.			JB	DN

PUDLO Products Limited
 Unit 1, Alington Road,
 St Neots, PE19 6YH
 Tel: +44 (0)1480 756888 Email: sales@pudlo.com
 www.pudlo.com

DRAWING TITLE	PROJECT		
CAPPING BEAM DETAIL 1	--		
STATUS	SCALE	SHEET No.	
--	1:10 on A3	1 of 1	
DRAWING NUMBER	REVISION	CLIENT	
PPL-TJD-P2.5-DS-015	-	--	

Note:-
 This PUDLO detail is to assist with the installation of its products. The detail shows how PUDLO CWP Modified Concrete and how PUDLO ancillaries are to be installed. For site specific details and confirmation on extent of where PUDLO CWP Modified Concrete is used i.e. Overlay drawings, must be confirmed by structural engineers/contractor. Individual/Company responsibility for design of the structure must ensure that details shown on PUDLO drawings match the latest construction issue drawings.
 The information shown on this detail is given without obligation, or warranty PRIOR to consultation or communication with PUDLO Products Limited.