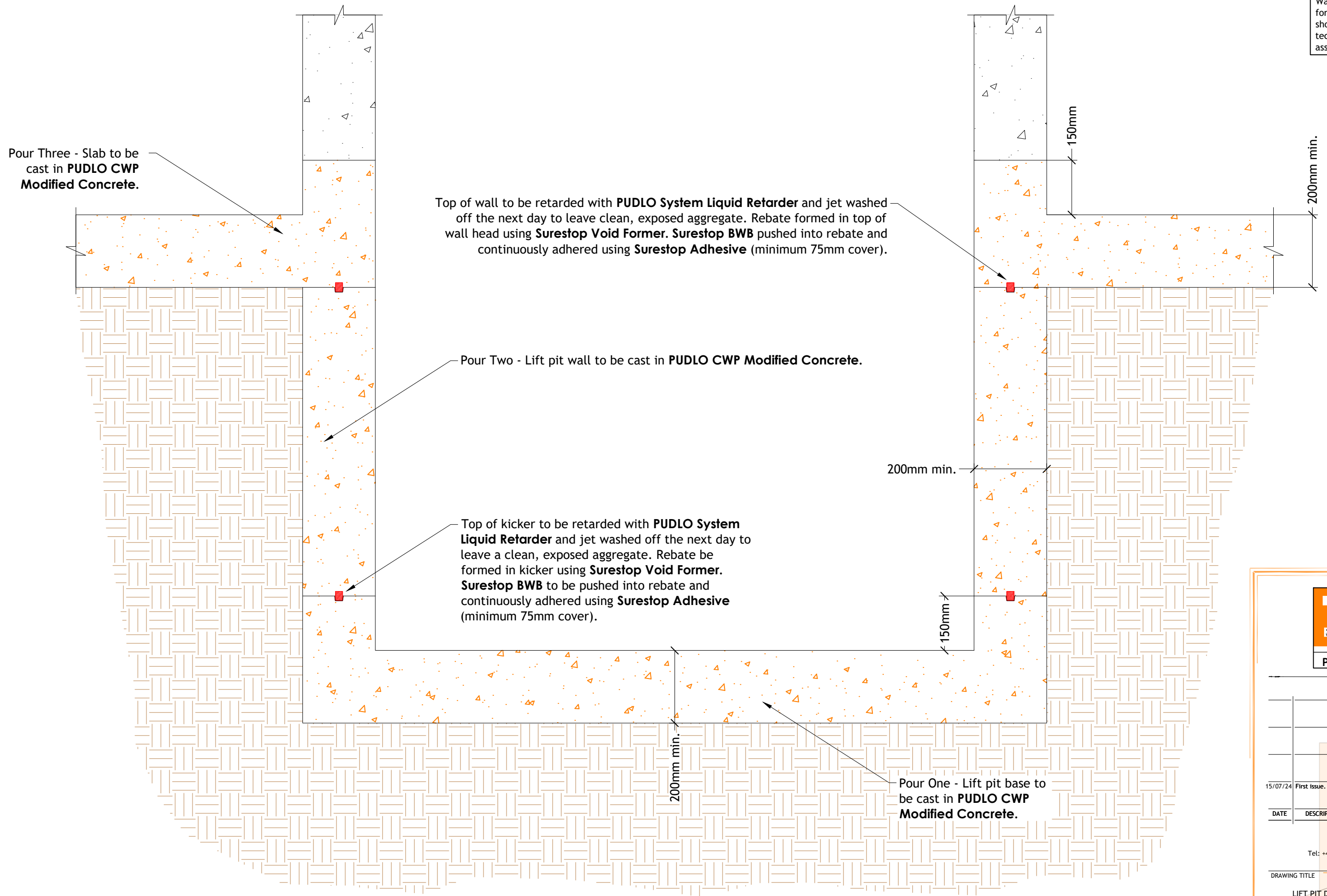



Note:-
 Warranty provider may require two forms of waterproofing requirement - should this be the case please contact technical@pudlo.com for further assistance.





PUDLO Products Limited

Revision History				
DATE	DESCRIPTION	Rev	Drm	Chk
15/07/24	First Issue.		JB	DN

PUDLO Products Limited
 Unit 1, Alington Road,
 St Neots, PE19 6YH
 Tel: +44 (0)1480 756888 Email: sales@pudlo.com
 www.pudlo.com

DRAWING TITLE LIFT PIT DETAIL 1	PROJECT --
STATUS --	SCALE As shown on A3
DRAWING NUMBER PPL-TJD-P2.5-SS-017	REVISION -
CLIENT --	SHEET No. 1 of 1

COPYRIGHT: Not to be reproduced without written permission

A3

PUDLO Products Limited
STD April 2024

Note:-
 This PUDLO detail is to assist with the installation of its products. The detail shows how PUDLO CWP Modified Concrete and how PUDLO ancillaries are to be installed. For site specific details and confirmation on extent of where PUDLO CWP Modified Concrete is used i.e. Overlay drawings, must be confirmed by structural engineers/contractor. Individual/Company responsibility for design of the structure must ensure that details shown on PUDLO drawings match the latest construction issue drawings.
 The information shown on this detail is given without obligation, or warranty **PRIOR** to consultation or communication with PUDLO Products Limited.