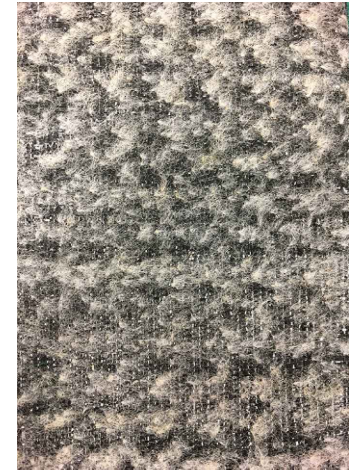


**N.B. - 300mm min. overlap required if selve edges/roll ends meet at a construction joint.**



Dark Grey GeoTextile to face installer. (THIS SIDE UP)



**Revision History**

DATE	DESCRIPTION	REV.	DES.	Q.C.
18/09/18	Updated to September 2018 design standards.	A	LD	LL
28/06/18	First issue.	-	LD	LL

**PUDLO Waterproof Concrete Systems**

Wellington Way, Bourn Airfield  
Cambridge, CB23 2TQ  
Tel: +44 (0)1954 780687 Email: sales@pudlo.com  
www.pudlo.com

DRAWING TITLE <b>OVERLAPPING DETAIL</b>	PROJECT -
STATUS <b>FOR INFO</b>	SCALE <b>nts on A4</b>
DRAWING NUMBER <b>PUDLO-TJD-BW-SS-038</b>	REVISION <b>A</b>
CLIENT	SHEET No. <b>1 of 1</b>

COPYRIGHT: Not to be reproduced without written permission

**A4**

PUDLO STD  
Sept 2018 v1

Note:-

This PUDLO detail is to assist with the installation of its products. The detail shows PUDLO CWP Modified Concrete and how PUDLO System accessories are to be installed. For site specific details and confirmation on extent of where PUDLO CWP Modified Concrete is used i.e. Overlay drawings, must be confirmed by structural engineers/contractor. Individual/Company responsibility for design of the structure must ensure that details shown on PUDLO drawings match the latest construction issue designs.

The information shown on this detail is given without obligation, or warranty **PRIOR** to consultation or communication with PUDLO/DBG Ltd.