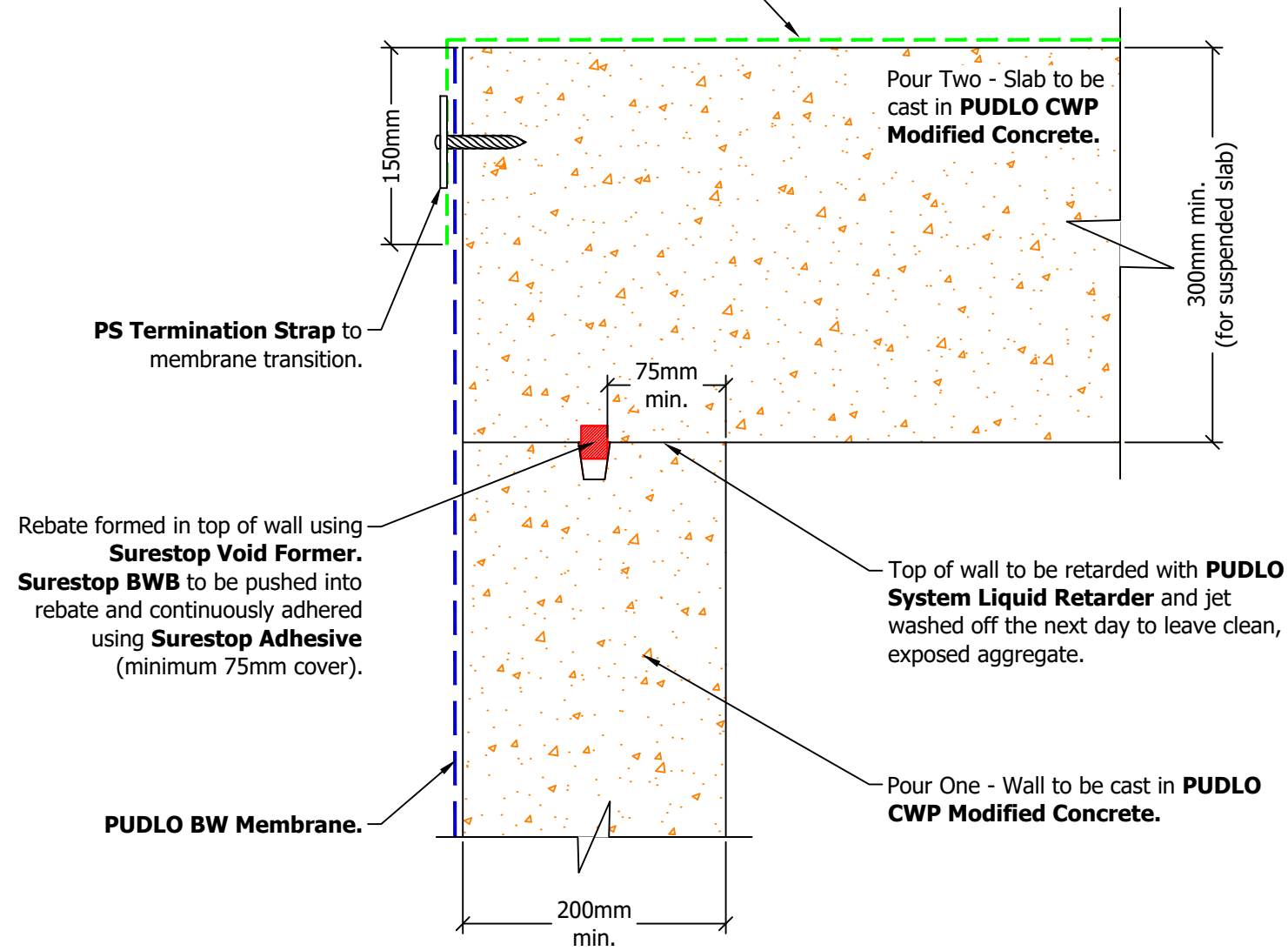
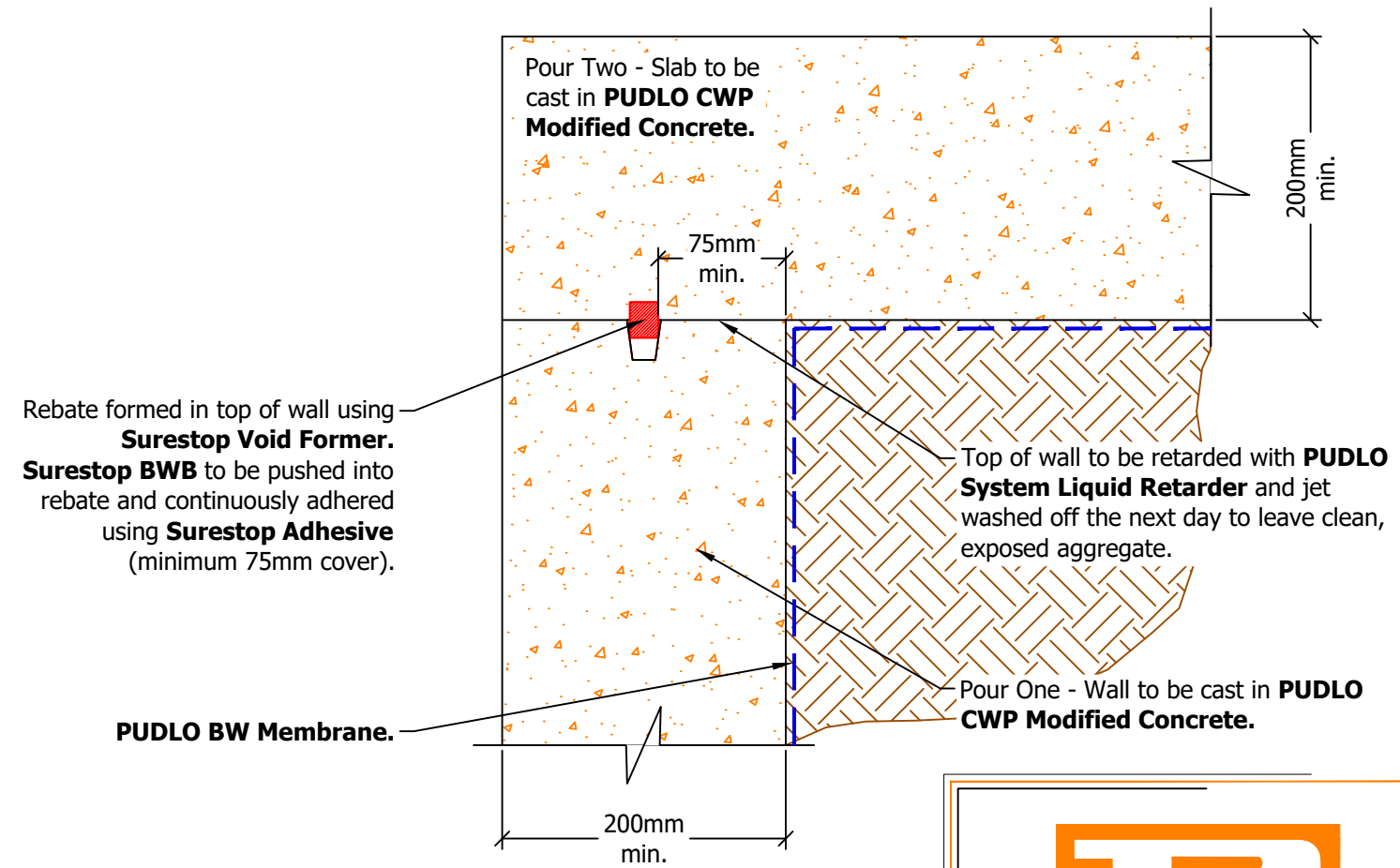



PUDLO Self Seal to be taken across capping beam and up to DPC level.
PUDLO Self Seal Primer to be applied prior to **PUDLO Self Seal**.



1 Wall Head at G/F slab
 Scale: 1:5



2 Wall Head at Ground Bearing Slab
 Scale: 1:5



Revision History				
DATE	DESCRIPTION	REV.	DES.	Q.C.
18/09/18	Updated to September 2018 design standards.	A	LD	LL
28/06/18	First issue.	-	LD	LL

PUDLO Waterproof Concrete Systems
 Wellington Way, Bourn Airfield
 Cambridge, CB23 2TQ
 Tel: +44 (0)1954 780687 Email: sales@pudlo.com
 www.pudlo.com

DRAWING TITLE WALL HEAD DETAIL	PROJECT	
STATUS FOR INFO	SCALE as shown on A3	
DRAWING NUMBER PUDLO-TJD-BW-SS-035	REVISION A	SHEET No. 1 of 1
CLIENT		

Note:-

This PUDLO detail is to assist with the installation of its products. The detail shows PUDLO CWP Modified Concrete and how PUDLO System accessories are to be installed. For site specific details and confirmation on extent of where PUDLO CWP Modified Concrete is used i.e. Overlay drawings, must be confirmed by structural engineers/contractor. Individual/Company responsibility for design of the structure must ensure that details shown on PUDLO drawings match the latest construction issue designs.

The information shown on this detail is given without obligation, or warranty **PRIOR** to consultation or communication with PUDLO/DBG Ltd.