

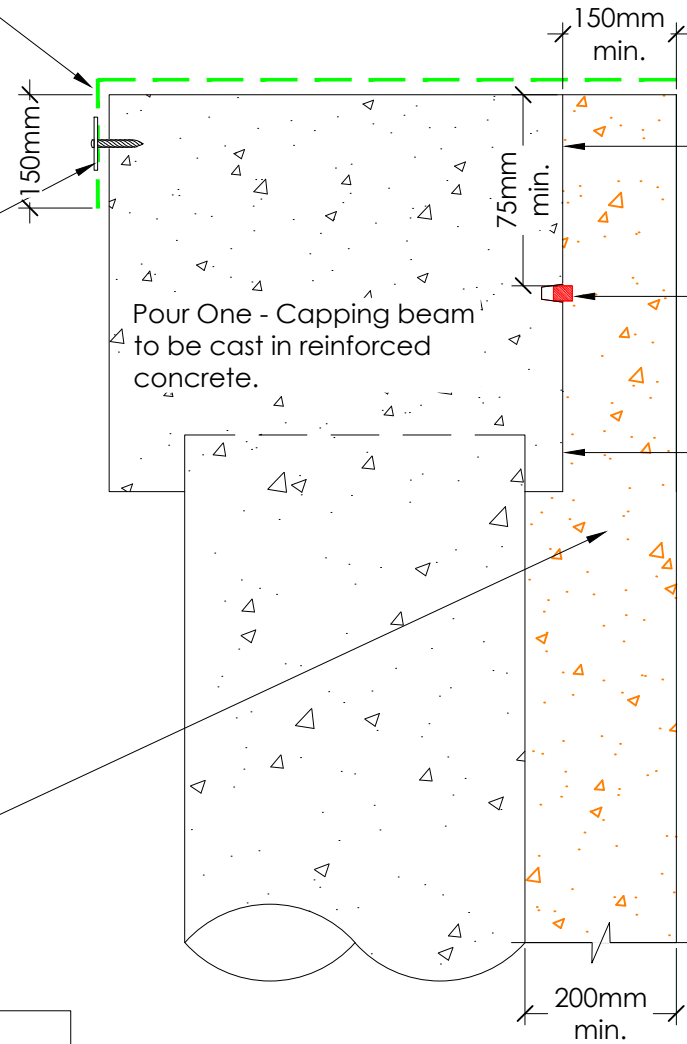
PUDLO Self Seal to be taken across capping beam and up to DPC level. **PUDLO Self Seal Primer** to be applied prior to **PUDLO Self Seal**.

PS Termination Strap to membrane transition.

Pour One - Capping beam to be cast in reinforced concrete.

Pour Two - Liner wall to be cast in **PUDLO 2.5 Modified Concrete**.

Note:-
Concrete for wall to be S4 slump with 10mm aggregate. Concrete should not be allowed to fall more than a maximum 2.5m from the end of the static line pump or skip hopper hose.



Face of capping beam to be retarded with **PUDLO System Gel Retarder** and jet washed off prior to wall pour to leave a clean, exposed aggregate.

Surestop Void Former to be nailed to capping beam shuttering. **Surestop BWB** to be pushed into rebate and continuously adhered using **Surestop Adhesive** (minimum 75mm cover).

Interface between **PUDLO** and non-**PUDLO** concrete excluded from warranty. Please contact **PUDLO** for project specifics.



Part of the DB Group

Revision History

DATE	DESCRIPTION	REV.	DES.	Q.C.
18/12/19	First issue.	-	LD	LL

DB Group (Holdings) Ltd
Wellington Way, Bourn Airfield
Cambridge, CB23 2TQ
Tel: +44 (0)1954 780687 Email: sales@pudlo.com
www.dbgholdings.com/pudlo

DRAWING TITLE CAPPING BEAM DETAIL 1	PROJECT -
STATUS FOR INFO	SCALE 1:10 on A4
DRAWING NUMBER PUDLO-TJD-P2.5-SS-024	REVISION - SHEET No. 1 of 1
CLIENT	